



**LUV.**

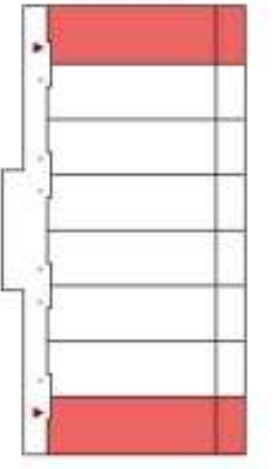
BEAUMONT PARK DEVELOPMENT

**RESIDENTIAL UNIT PLANS**

Friday, October 10th, 2014

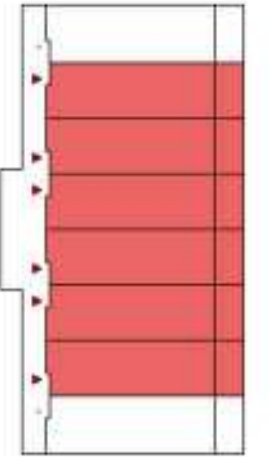
# STUDIO BUILDING

## STANDARD STUDIO (END UNIT)



# STUDIO BUILDING

## STANDARD STUDIO



**LUV.**

LUV.  
C/ Mariana Pineda 6. Local 1  
08012 Barcelona  
T. 93 415 56 85

BEAUMONT PARK  
Residential Building

SITUATION  
Beaumont Park, St. Kitts and Nevis  
PROPERTY  
BPL

DATE  
October 2014

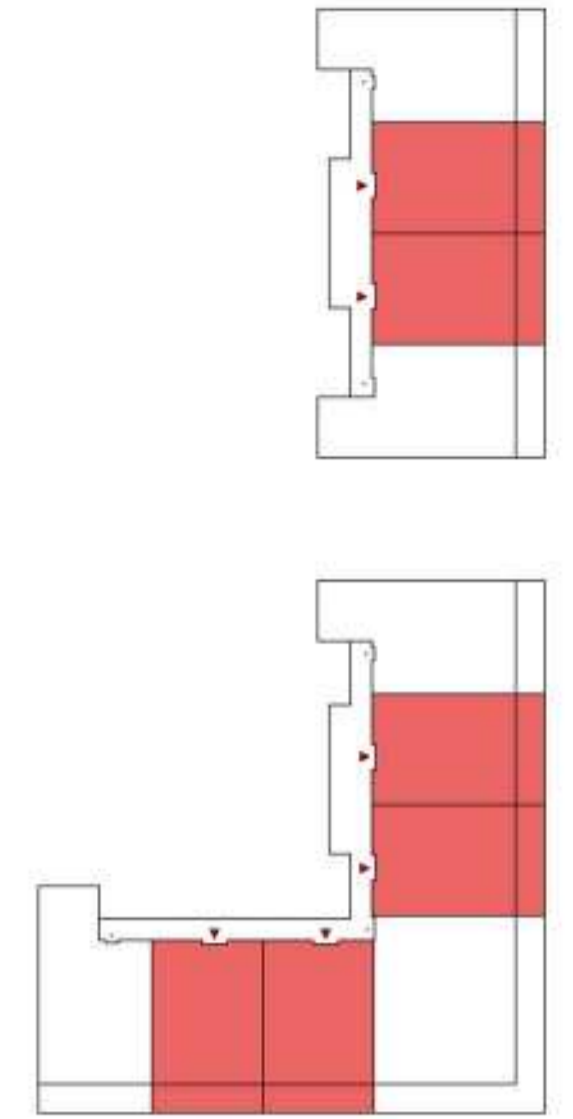
STUDIO BUILDING  
**STANDARD STUDIO**  
SCALE A1 ———  
A3 ———

SHEET NUMBER

AR.002

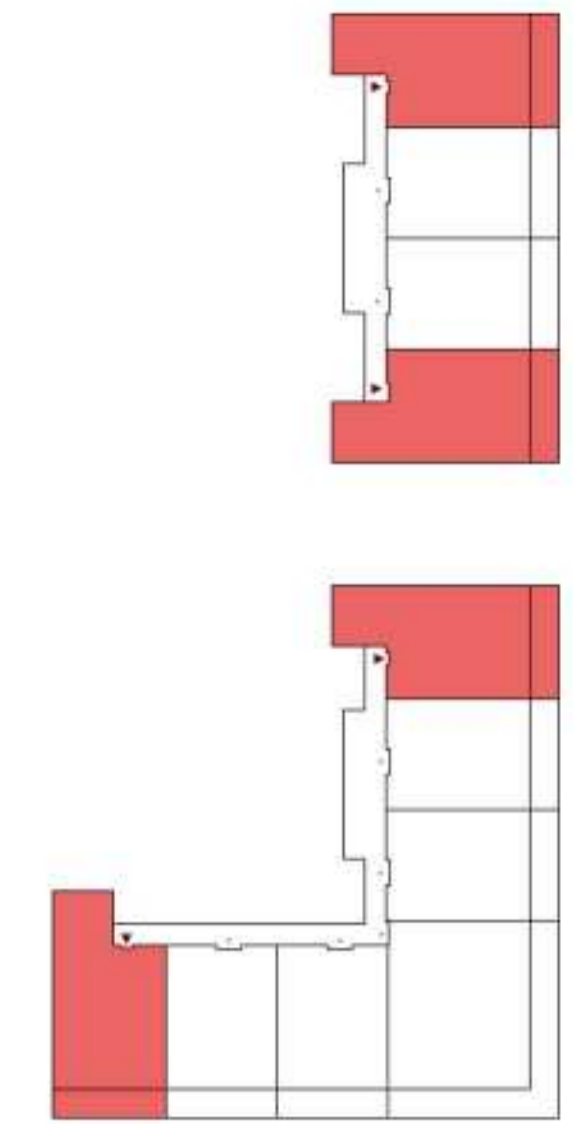
# APARTMENT BUILDING

## 1 BEDROOM APARTMENT



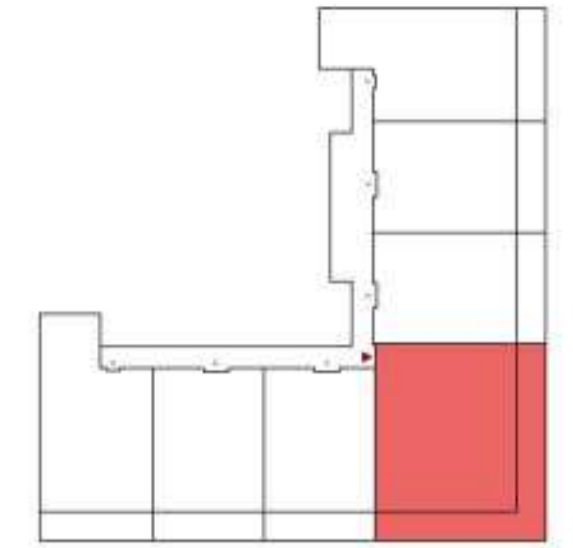
# APARTMENT BUILDING

## 2 BEDROOM APARTMENT (END UNIT)



# APARTMENT BUILDING

## 2 BEDROOM DELUXE APARTMENT (CORNER UNIT)



# VILLAS

## 2 BEDROOM VILLA



**LUV.**

LUV.  
C/ Mariana Pineda 6. Local 1  
08012 Barcelona  
T. 93 415 56 85

BEAUMONT PARK  
Residential Building

SITUATION  
Beaumont Park, St. Kitts and Nevis  
PROPERTY  
BPL

DATE  
October 2014

VILLAS  
**2 BEDROOM VILLA**  
SCALE A1  
A3

SHEET NUMBER

AR.006

# VILLAS

## 3 BEDROOM VILLA



**LUV.**

LUV.  
C/ Mariana Pineda 6. Local 1  
08012 Barcelona  
T. 93 415 56 85

BEAUMONT PARK  
Residential Building

SITUATION  
Beaumont Park, St. Kitts and Nevis  
PROPERTY  
BPL

DATE  
October 2014

VILLAS  
**3 BEDROOM VILLA**  
SCALE A1  
A3

SHEET NUMBER

AR.007