

INSPIRING CAPITAL, AN AWARD WINNING CITY


EDINBURGH

Investor Support Pack



Scan the cover for a
virtual introduction
to Edinburgh

Your next move >>>

An aerial photograph of Edinburgh, Scotland, taken from Arthur's Seat. The foreground shows the green, grassy slopes of the hill with a winding path. In the middle ground, the city of Edinburgh is visible, including the Edinburgh Castle on a rocky outcrop. The background shows the city extending to the coast under a blue sky with scattered white clouds.

Edinburgh is a world leader in science, business, education and the arts; it is the economic, political and cultural heart of Scotland.

Introduction



Edinburgh, the capital of Scotland, is a European centre of commerce, culture and knowledge. The city benefits from one of the UK's most highly-educated and productive workforces, while an unrivalled quality of life makes the city a magnet for international talent and tourists alike. Excellent transport links by air, land and sea connect Edinburgh with key global markets. Multi-national companies and organisations with their global headquarters in Edinburgh are supported by an established network of professional services firms. The city is a location of choice for research and development and other knowledge-intensive activities, with the world-renowned University of Edinburgh and five other universities and colleges producing a steady flow of graduates, intellectual property and spin-out companies.



Contents

The City of Edinburgh Council offers a dedicated support service for investors moving into the city. This pack gives an introduction to Edinburgh and provides information and advice to make the move as simple as possible. The pack covers:

Key Sectors

Information on the city's key business sectors

Locating in Edinburgh

Commercial property and services to support your relocation

Doing Business

Business costs, immigration laws and tax

Connectivity

Edinburgh's international links, local transport network and telecommunications

World Class Talent

The city's highly skilled workforce, higher education institutes and R&D presence

Living in Edinburgh

Housing, healthcare, cost of living and quality of life

Education

Schools and day-care

Support Services

The support services available to investors

Capital Facts

Killer facts about Edinburgh city

Key data

Indicator	Number	Date	Source
Population (Edinburgh)	495,360	2011	General Register Office for Scotland
Population (Edinburgh City Region)	1.63 million	2011	General Register Office for Scotland
Population (Scotland)	5.25 million	2011	General Register Office for Scotland
Households	221,954	2011	General Register Office for Scotland
Working age population	355,767	2011	General Register Office for Scotland
Average annual wage of workers	£24,700	2011	Office for National Statistics
Average annual disposable income	£17,300	2010	Office for National Statistics
Annual output per worker	£57,600	2011	Office for National Statistics
Average annual office rent	£290 per m ²	2012	Ryden
Average residential property selling price	£217,500	2011	Registers of Scotland
Annual airport passengers	9.4 million	2011	Civil Aviation Authority
Annual rail passengers	23.7 million	2011	Office of Rail Regulation
Annual tourist visits	3.7 million	2011	VisitScotland
Annual tourist expenditure	£12 billion	2011	VisitScotland

Jobs in Edinburgh by sector (2011)

Total 302,100

Transport and storage 10,200

Information and communication 12,400

Other service and household activities 15,500

Hospitality 26,800

Financial services 34,600

Wholesale and retail 36,400

Construction 9,000

Manufacturing 7,300

Primary industries 3,300

Public administration, education, health 93,200

Business services 53,400

Businesses in Edinburgh by employee size band (2011)

Total 14,900

0-4 (10,875)

5-9 (2,060)

10-19 (1,085)

20-49 (490)

50-99 (170)

100-249 (115)

250+ (105)

Source: Office for National Statistics

Key Sectors

Financial Services

Edinburgh is the UK's largest financial centre outside of London and a major European centre for asset management and servicing, with over £500 billion of funds under management.

Edinburgh's financial services sector is extremely diverse with additional strengths across banking, life insurance and pensions. The city employs 35,000 people and is home to two of the world's top 150 financial services companies (Forbes 2012).

Financial services companies headquartered in the city include:



Multinationals with a significant presence in Edinburgh include:



STATE STREET





Renewable Energy

Edinburgh is at the forefront of Scotland's renewable energy sector. The city region has expertise in developing and bringing to market new renewable technologies and existing strengths in engineering and conventional energy including a rich skills base. The world's first Green Investment Bank has been established in Edinburgh to provide the necessary capital to bring large-scale, ambitious green projects to fruition.

Business activities undertaken by the sector in Edinburgh include head office functions and research and development.



Based on planned developments in the Firth of Forth, the Edinburgh City Region could potentially have over 10% of Europe's offshore wind installed capacity by 2020.

A number of renewable energy companies headquartered in Edinburgh have penetrated global markets. Several of the world's leading renewable energy companies have a presence in Edinburgh including REpower, Enercon, Areva, EDP Renewables, Vattenfall and Repsol. Edinburgh is also home to two leading wave power companies - Aquamarine Power and Pelamis Wave Power. Sectoral innovations that have taken place in Edinburgh include the wave power generator used in the world's first commercial wave farm; the world's first silent, building-mountable wind turbine; and the world's largest operational hydro-electric wave energy converter.

Life Sciences

Edinburgh's universities are global centres of excellence in disciplines including stem cell research, cardiovascular medicine, genetics, inflammation and animal bioscience. The city is home to world-leading companies Charles River, GSK, Johnson & Johnson, McFarlan Smith and Aviagen.



High-profile innovations such as the cloning of Dolly the Sheep, the creation of the first genetically engineered vaccine for Hepatitis B and the development of the first powered bionic finger have contributed to a strong international profile.

The Edinburgh Science Triangle is a dynamic collaboration of eight science and research locations within 30 minutes of each other, located close to Edinburgh city centre. Among these is the Edinburgh BioQuarter, a landmark UK life sciences real estate development, which co-locates academics, clinicians and the private sector and promotes collaboration between academia and business.

Creative Industries

Edinburgh is a major UK hub for the creative industries. The sector encompasses advertising, architecture, art and design, computer and video games, crafts, designer fashion, film and video, music, the performing arts, publishing, software and broadcasting. The city is home to leading creative companies including Skyscanner, one of Europe's fastest-growing technology firms, and Rockstar North, the developer behind the multi-award winning, bestselling Grand Theft Auto videogame franchise.



Edinburgh's creative community combines talent and ambition to shape some of the world's most innovative ideas. <http://goo.gl/Yhi5b>

Tourism

Edinburgh City Region is a major tourism centre in the UK and gateway to the rest of Scotland. With an award-winning reputation as one of the most attractive destinations in the world, the city offers an ideal mix of retail, culture, music, heritage and leisure facilities. Visitors to Edinburgh spend over £1 billion per year.

There is an ongoing requirement for additional visitor accommodation in the city, with occupancy rates in the peak summer months amongst the highest in Europe. Growth in the tourism sector means that around 900 new hotel rooms will be needed every year up to 2021. Opportunities exist across the city centre and at the city's airport.

For development opportunities please visit the Edinburgh Hotel Prospectus at www.investinedinburgh.com



UK'S BEST CITY (13TH CONSECUTIVE YEAR) - GUARDIAN/OBSERVER POLL

EUROPE'S LEADING DESTINATION - WORLD TRAVEL AWARDS 2012

UNESCO WORLD HERITAGE SITE

The City of Edinburgh Council supports businesses, property investors and developers seeking to capitalise on the opportunities presented by one of Europe's most inspiring cities.

Locating in Edinburgh



Opportunities exist to shape the future of more than 2,400 hectares of prime real estate spread across four key development zones. Our dedicated team can provide easy access to a wide range of commercial property experts, access to up-to-date information on local labour markets as well as fast track guidance on all aspects of local planning.

OFFICE: Average annual office rents in European cities (2012)

Stockholm	€536
Oslo	€460
Zurich	€403
Frankfurt am Main	€360
Edinburgh	€277
Helsinki	€252
Dublin	€240
Lyon	€240
Lisbon	€178
Copenhagen	€174

Source: Colliers International 2012

Rate:
(€ per m² per year)

RETAIL: Average annual retail rents in European cities (2012)

Zurich	€7,836
Dublin	€4,848
Frankfurt am Main	€3,600
Copenhagen	€2,688
Edinburgh	€2,436
Oslo	€2,040
Helsinki	€1,980
Stockholm	€1,812
Lisbon	€876

Source: Colliers International 2012

Rate:
(€ per m² per year)



Property Search

Prime office rents in Edinburgh are very competitively priced, at around a third of London's west end, less than half of the City of London and lower than prime office rents in both Manchester and Birmingham.

For information on the City of Edinburgh Council's property for sale or to let, contact the Investor Support team on **+44 (0)131 529 6600**.

New Developments

The city region's commercial property portfolio includes prime city centre grade-A office space, cost competitive properties in Leith and West Edinburgh, and a variety of specialist properties across the four development zones.

Occupier Services

The City of Edinburgh Council offers a range of free advisory and support services to help companies seeking new premises within Edinburgh. Our expert team and partners can offer:

- Details of current market incentives, including very competitive deals, rent free holidays and capital contributions
- Advice on availability of land and commercial property
- Time and cost savings through market knowledge and contacts
- Information on rental and business rates
- Information on Edinburgh's economy, lifestyle, transport and communication links

- Access to relevant departments such as planning and building control
- Details of properties to let/sell from the City of Edinburgh Council and other vendors
- Information on new developments

Property Consultants and Recruitment Agencies

We work with a number of property consultants and recruitment agencies and are able to advise on consultants.

For further information please visit www.investinedinburgh.com



£85m
EXPANSION OF
EDINBURGH
INTERNATIONAL
CONFERENCE CENTRE
AND 194,000 SQ FT OF
GRADE A OFFICE SPACE



1/3
PRIME OFFICE RENTS
ARE AROUND
ONE THIRD
THAT OF
LONDON'S WEST END

CONFERENCE DESTINATION

As well as a fantastic array of conference centres and hotels, Edinburgh is home to centres of excellence across a range of fields. This makes the city the perfect destination for business and academic conferences. In 2012 the city hosted 132 conferences with a combined economic value of £75m.

Venues range from state of the art conference centres to venues with a difference such as galleries, museums, universities, castles and majestic stately homes – even the zoo! An £85m expansion of the Edinburgh International Conference Centre means the city now offers a 21,500 sq ft multi-purpose hall.

Marketing Edinburgh Convention Bureau (MECB) can provide a free tailored service in event planning. MECB can also support your event with a range of marketing collateral including images, brochures and presentations on Edinburgh.

The MECB accommodation booking team will make every effort to find suitable delegate accommodation, in the right place and at the right price. Guests receive free welcome packs on arrival.

MECB can also suggest the perfect activities for your social programme, which will enhance your conference and introduce your delegates to all that Edinburgh has to offer its visitors.

www.conventionedinburgh.com



Edinburgh has a higher than average proportion of its residents who are educated to NVQ4 level (degree level)... 'smart' towns need 'smart' people.

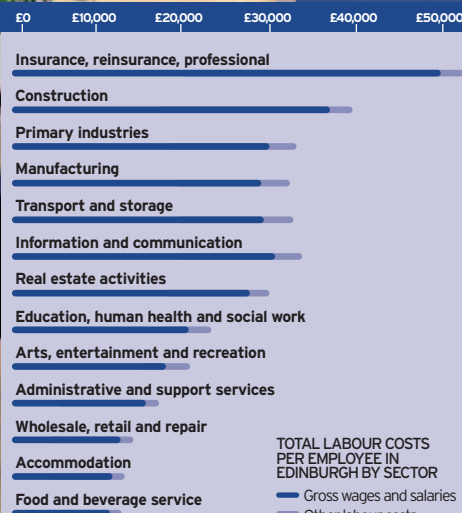
Source: The Santander UK Town and City Index, 2012

Doing Business

Operating Costs

Labour Costs

The average weekly pay for a full-time employee in Scotland was £500 in 2012 – over 30% lower than London. Non-wage labour costs in the UK are highly competitive, while the UK labour market is extremely flexible in comparison to continental Europe. The national statutory minimum wage is currently set at £6.19 per hour for adults aged 21 and older – equivalent to £250 for a 40 hour working week. For further information please visit www.investinedinburgh.com



TOTAL LABOUR COSTS
PER EMPLOYEE IN
EDINBURGH BY SECTOR

- Gross wages and salaries
- Other labour costs

Source: Scottish Government, Scottish Annual Business Statistics

EDINBURGH

INSPIRING CAPITAL
www.investinedinburgh.com

CREATIVE EXCHANGE LAUNCH EVENT



Visas and immigration

European nationals

If you are a national of the European Economic Area (EU countries, Iceland, Norway and Liechtenstein) or Switzerland, you have right of residence (the right to live and work) in the UK. The following family may join you here:

- Your spouse (husband or wife) or civil partner
- Any children or grandchildren of you/your spouse/your civil partner who are under 21 years or are dependent on you
- The parents or grandparents of you, your spouse or your civil partner

If your family members are not EEA or Swiss nationals they may need to apply for an EEA family permit.

Non-European nationals

The UK Border Agency provides step-by-step advice on visas and immigrations for investors living outwith the European Union and Switzerland www.ukba.homeoffice.gov.uk/visas-immigration/working/tier1/

Tax

The United Kingdom offers a tax regime that is highly competitive in attracting foreign investments

UK corporation tax on taxable profits

The UK has one of the most competitive corporate tax rates among the European countries – currently at 26% for profits over £1.5m, reducing by 1% annually to 23% on 1 April 2014. A reduced rate of 20% applies to companies with taxable profits of £300,000 or less.

Payroll tax regulations (PAYE)

Companies operating in the UK are also required to comply with Pay as You Earn (PAYE), which includes monthly and annual reporting and payroll tax deduction on behalf of its employees.

VAT

In compliance with the European VAT regulations, companies are required to charge VAT of 20.0% on their sales, and recover VAT accrued on their purchases.

Capital duty

There is no capital duty in the UK. Transfer taxes apply to transfers of properties such as shares and real estate with rates varying between 0.5% to 5% of the transfer value.

Capital gains tax

Unlike many jurisdictions, the UK operates a very favourable capital gains tax regime towards offshore investors – there is no capital gains tax on disposals of UK assets made by non-resident entities. Therefore, for genuine offshore property investment companies, there is no UK tax to pay on gains made from their UK property investments.

Withholding tax

There is no withholding tax on dividends payable to offshore investors. This means that profits can be repatriated free of tax to any investor jurisdiction and this (together with the UK's exemption from tax on dividends received) adds to the UK's tax competitiveness and makes the UK a very attractive location for international businesses.

With a series of new measures and proposals, the UK is making more effort to encourage onshore research and innovation activities. It was recently announced that a beneficial regime would be introduced for Intellectual Property. This would apply a 10% corporation tax rate to income arising from April 2013 on patents registered after the enactment of Finance Act 2011. Other tax allowances have also been recently enhanced, such as Research and Development (R&D)

tax credits, which encourage greater R&D spending in order to promote investment in innovation. The R&D tax deduction available for small to medium enterprises (SMEs) and large companies is respectively 200% (rising to 225% in 2012) and 130% of the actual cost incurred.

Inbound acquisitions

The UK offers a wide range of tax incentives for companies investing in its domestic market.

With regard to the debt finance of investments, the UK allows deductions for tax purposes of interest expenses incurred in financing investment, subject to interest limitation rules, as well as the usual business purpose and debt/equity rules. Nevertheless, most inward investors can, with careful planning, obtain significant deductions in the UK for financing costs. The UK also provides tax deductions against profits for any expenditure on intellectual property (IP) and this includes goodwill on the purchase of a trade or business (but not goodwill on the purchase of shares).

Also available is the Enterprise Investment Scheme (EIS); this allows smaller higher-risk trading companies to raise finance by offering a range of tax reliefs to investors who purchase new shares in those companies.



Edinburgh City Region is one of Scotland's best connected areas, with a sophisticated transport and communication network linking it with the rest of the UK, Europe and beyond.

Connectivity

International Links

Air

Edinburgh Airport is the 6th largest airport in the UK by passenger numbers. For three consecutive years, the airport has been named 'Best European Airport' of its size by the Airports Council International EUROPE. As Scotland's busiest airport, it carries over 9 million passengers and more than 10,000 tonnes of cargo per year with more than 40 airlines flying to over 130 destinations worldwide. These include key European hubs providing onward connections, via London, Amsterdam, Paris, Frankfurt, Brussels and Copenhagen. The airport offers direct long-haul flights to New York, Toronto and Istanbul.

For further information please visit www.investinedinburgh.com

DIRECT LINKS AND FLIGHT TIMES FROM EDINBURGH AIRPORT	
London	55mins
Amsterdam	1hr 25mins
Paris	1hr 40mins
Frankfurt	1hr 50mins
Istanbul	4hrs 20mins
Toronto	7hrs 30mins
New York	7hrs 40mins
New flights for 2014	
Doha	6hr 55mins
Philadelphia	7hr 45mins
Chicago	8hr 25mins

Source: Edinburgh Airport



Rail



Edinburgh Waverley is one of the UK's busiest train stations with approximately 23 million users per year and increasing. Providing fast travel throughout the UK, Edinburgh to London by train takes just over 4 hours. The station is nearing completion of a £295m upgrade. Towards the west of the city centre, developments at Haymarket will see a new inter-modal transport interchange linked to the international airport.

Port

Leith Harbour is Scotland's largest deepwater port, capable of handling bulk carriers of up to 50,000 DWT. The Harbour benefits from a dedicated rail link; quayside cranes; 28,000m² of transit sheds and a cruise liner terminal.

Trams

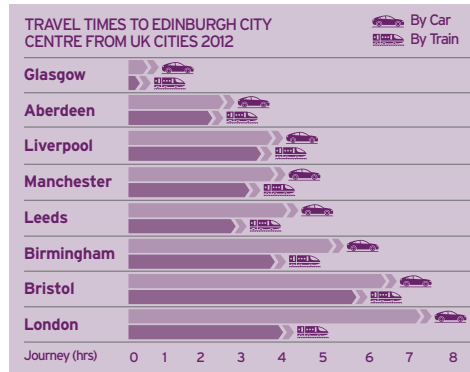
Work is currently underway to construct a tramline which will directly link the city centre to Edinburgh Airport, forming part of a new integrated transport network. Passenger services will be operational by Spring 2014.



Edinburgh's trams will be among the most advanced in Europe, offering a fast, safe and efficient service with zero on-street carbon emissions. There are 16 tram halts along the 14km route, including stops at Edinburgh Park business park, the central business district and both main rail stations.

Sustainable Edinburgh

Edinburgh is regarded as one of the most walkable cities in the UK. Over a quarter of commuters walk or cycle to work, while another 30% use public transport. Over 70km of traffic free cycle paths criss-cross the city.



Source: ScotRail and The AA

Telecommunications

As an international centre for science, technology and financial services, levels of e-connectivity in Edinburgh are among the highest in the UK. The capital offers an excellent choice of high bandwidth networks and is located on the UK backbone of every major telecommunications carrier. Edinburgh has one of the highest average broadband speeds in the UK, while super-fast broadband is available to 83% of addresses within the city.



83%

OF EDINBURGH ADDRESSES
HAVE ACCESS TO SUPER-
FAST BROADBAND

70km

OF TRAFFIC-FREE CYCLE
PATHS THROUGHOUT
THE CITY

Edinburgh City Region is home to one of the UK's most productive and qualified workforces and is internationally renowned for the quality of its talent base.

Average annual productivity in European cities (2010)

Dublin	€85,939
Frankfurt am Main	€75,377
Edinburgh	€68,907
Oslo	€67,009
Stockholm	€66,050
Lyon	€64,874
Helsinki	€64,281
Zurich	€62,561
Copenhagen	€54,503
Lisbon	€51,179

GDP per employee
 Source: Organisation for Economic Co-operation and Development

Foreign languages spoken fluently by adult residents of Edinburgh (2012)

Polish	4.8%
French	2.6%
Punjab-Urdu	2.5%
German	1.8%
Italian	1.2%
Spanish	1.0%
Panjabi	0.6%
Mandarin	0.4%
Cantonese	0.3%
Arabic	0.2%

Source: The City of Edinburgh Council

World Class Talent

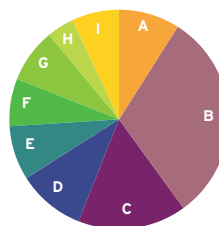
The city region's academic institutions are internationally renowned for their research and teaching excellence. This talent base combined with the area's quality of life and its environment are key attractions for employers and their employees.

With 45% of the working age population educated to degree-level or above, Edinburgh's workforce is one of the most qualified of any UK city. With a city region population of 1.63 million, Edinburgh benefits from a pool of workers covering a large metropolitan commuter belt.

For further information please visit www.investinedinburgh.com

Workers in Edinburgh by occupation (2012)

Total 257,900

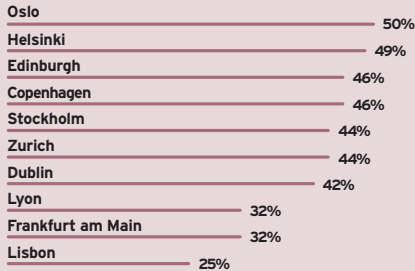


- A) Managers, directors and senior officials 22,300
- B) Professionals 81,200
- C) Associate professionals/technical 40,700
- D) Administrative and secretarial 25,400
- E) Skilled trades 20,300
- F) Caring, leisure and other services 19,000
- G) Sales and customer service 20,000
- H) Process, plant and machine operatives 9,200
- I) Elementary occupations 19,800

Source: Office for National Statistics



Residents aged 25-64 with degrees in
European NUTS2 regions (2012)



Source: EuroStat

Universities

There are four universities in Edinburgh, all of them offering an exceptionally high standard of education. The city's largest university, the University of Edinburgh, is regularly ranked one of the top higher education institutions in the world in prestigious indices such as the Times Higher Education World University Rankings and the Academic Ranking of World Universities.

There are close to 60,000 students enrolled in Edinburgh's four universities, which collectively produce over 15,000 graduates each year.

Edinburgh's universities attract high-calibre students from all over the world.

Commercialisation

Edinburgh's universities have an impressive record of commercialising research. Companies spun-out from the universities include the global semiconductor supplier Wolfson Microelectronics and the software company DEM Solutions

(winner of the 2013 Global Frost & Sullivan Entrepreneurial Company of the Year Award).

The following teaching and research universities are located in and around Edinburgh:

- The University of Edinburgh (19,000 undergraduates, 8,700 postgraduates): an ancient university that is world-leading in a range of disciplines, ranked Europe's sixth best university by The Times
- Edinburgh Napier University (12,400 undergraduates, 2,700 postgraduates): a modern university that concentrates on industry-orientated education and research
- Heriot-Watt University (6,600 undergraduates, 4,300 postgraduates): a modern university with a strong focus on engineering and applied science
- Queen Margaret University, Edinburgh (3,400 undergraduates, 1,800 postgraduates): a modern university with recognised expertise in health sciences, food and drink and tourism

Colleges

In addition to its universities, there are two colleges in Edinburgh providing students with sub-degree level qualifications:

- Edinburgh College: Scotland's largest college, offering a wide range of courses
- Scotland's Rural College: a college with a focus on education and research relevant to Scotland's land-based industries

Research and Development

Edinburgh is home to numerous corporate research and development facilities. The city's highly-educated workforce and critical mass of research institutions combine to make Edinburgh a favoured location for the development of innovative new products.

The city's four universities, two colleges and multiple independent research institutes produce world-leading research in disciplines such as computer science, clinical medicine, electronics and chemistry, with opportunities for collaborations and technology licensing. Businesses in the city can also access world-class specialised research assets such as a clinical research imaging centre, a marine device test facility and the "HECToR" Cray XE6 supercomputer.

Companies who have established R&D centres in Edinburgh include:

- Amazon (e-commerce software)
- Aviagen (poultry genetics)
- Renishaw (metrology)
- Selex Galileo (avionics)
- STMicroelectronics (semiconductors)



Edinburgh is recognised throughout the world as a fantastic place to live.

Average house prices in some of the city's most sought after residential areas are up to £1.7m.

Living in Edinburgh

Housing

From character period properties to modern new developments, city centre apartments to country homes, there are an array of housing options available throughout the city: www.espc.com

Searching for a home can often be difficult when you don't know the area. To make this easier, this pack offers information on Edinburgh's amenities, transport options within the city and details on local schools and universities.

Cost comparison

Edinburgh also offers competitive rental costs compared to other UK cities, as shown in this graph.

The letting agency Citylets publishes quarterly reports providing a breakdown of average rents in each area of Edinburgh: www.citylets.co.uk

Information on Council Tax and other costs can be found at www.edinburgh.gov.uk

For further information please visit www.edinburgh-inspiringcapital.com/live.aspx

AVERAGE MONTHLY RENT ON A BEDROOM (MAY 2013)

West Central London	£824
East London	£808
West London	£680
East Central London	£568
Edinburgh	£376
Bristol	£364
Birmingham	£344
Manchester	£344
Glasgow	£344
Leeds	£320
Sheffield	£320
Liverpool	£320
Bradford	£276

Source: Spareroom.co.uk

Information on Council Tax and other costs can be found at www.edinburgh.gov.uk/counciltax



Healthcare

The National Health Service is world-renowned for its high-quality care and universal coverage. If you are a citizen or national of a European Economic Area (EEA) country, you and your family qualify for full NHS treatment within the UK.

The EEA covers European Union (EU) countries, Iceland, Norway and Liechtenstein, and EEA regulations also apply in Switzerland.

Reciprocal healthcare agreements

The United Kingdom has reciprocal healthcare agreements with a number of countries outwith the EEA. For further information visit www.nhs.uk

Private healthcare

Private healthcare is also well represented in Edinburgh by private health institutions such as BUPA and through private practice at the Edinburgh Royal Infirmary and St John's Hospital.



Festival City

The festivals, together with the vibrant cultural life they generate, are a major factor in making Edinburgh one of the most attractive places in the UK to live, work, invest and visit. Hosting the biggest and best festivals in the world, Edinburgh is recognised as the world's number one festival city, reflecting its unique programme of outstanding year-round festivals.

Edinburgh's festivals are a truly world-renowned cultural phenomenon. In 2010, the Edinburgh festivals generated an estimated £261 million for the Scottish economy, £245 million of it in Edinburgh.

The city remains a magnet for audiences and artists from around the world: The Festival Fringe is the largest arts festival in the world, and the International Film Festival is the longest continually running film festival.



WORLD'S LARGEST ARTS FESTIVAL CITY – GUARDIAN



Cost of Living

This table provides a comparison of the cost of various day-to-day amenities and services in Edinburgh.

For further information please visit www.investinedinburgh.com

	Amsterdam	Barcelona	Berlin	Bruges	Copenhagen	Dublin	Edinburgh	London	Paris	Rome	Stockholm
Cup of coffee	£1.98	£1.13	£1.89	£1.80	£4.23	£1.80	£2.00	£1.80	£1.80	£0.90	£2.52
Bottle of lager	£2.07	£1.80	£2.61	£3.15	£3.62	£4.05	£3.60	£3.60	£4.14	£3.60	£5.85
Bottle/can of Coca-Cola	£1.98	£1.67	£1.80	£1.80	£3.02	£1.08	£1.50	£2.25	£3.33	£2.25	£2.32
Return bus or train transfers from airport to city centre	£6.85	£1.80	£5.41	£30.45	£8.70	£4.95	£6.00	£27.00	£16.67	£14.41	£19.96
48 hour travel card	£10.81	£11.53	£16.13	£10.81	£22.95	£33.33	£7.00	£15.40	£14.28	£7.21	£23.19
1 night at 3* hotel for 2 adults	£116	£126	£73	£102	£113	£82	£96	£115	£125	£116	£173
Phone and broadband (monthly)	n/a	£35	£55	n/a	n/a	n/a	£35	£35	£49	£67	n/a

Source: Post Office Cost of Living Barometer, Ofcom - European Broadband Scorecard 2013

Scotland's education system
has a huge reputation, with
Edinburgh at its centre.

Education

Edinburgh City Region has a rich variety of prestigious schools. The region caters for a full range of educational needs, spanning the state and independent sectors offering co-educational, same sex, day and boarding options from impressive nursery school provision to the best in higher education. For further information please visit www.investinedinburgh.com



Edinburgh's schools

The Scottish educational system has an excellent reputation, and nine of the top 50 state schools in Scotland are located in the Edinburgh city region, according to The Sunday Times. There is a huge choice of primary (ages 5-11) and secondary (ages 12-18) schools, coupled with high standards across the board.

Independent schools

Edinburgh has a high proportion of prestigious independent schools, with 23% of Scotland's privately run schools located within the city. The high standard of the city's schools is reflected in recent figures showing that pupil numbers continue to rise - with some schools having their largest number of pupils to date - despite the overall number of pupils in independent schools having fallen for the past five years (Scottish Council of Independent Schools).

The following independent schools are located within the city:

Cargilfield Preparatory School	Coeducational	Ages 3-12	Day/Boarding
Clifton Hall School	Coeducational	Ages 3-18	Day
Dunedin School	Coeducational	Ages 11-16	Day
Edinburgh Academy	Coeducational	Ages 2-18	Day
Edinburgh Steiner School	Coeducational	Ages 3-18	Day
Fettes College*	Coeducational	Ages 7-18	Day/Boarding
George Heriot's School	Coeducational	Ages 4-18	Day
George Watson's College	Coeducational	Ages 3-18	Day
Mannafields Christian School	Coeducational	Ages 5-14	Day
Merchiston Castle School	Boys	Ages 8-18	Day/Boarding
Regius School	Coeducational	Ages 5-12	Day
Royal School for the Blind	Coeducational	Ages 3-19	Day/Boarding
St George's School for Girls	Girls	Ages 2-18	Day/Boarding
St Mary's Music School	Coeducational	Ages 9-19	Day/Boarding
Stewart's Melville College	Boys	Ages 3-18	Day/Boarding
The Mary Erskine School	Girls	Ages 3-18	Day/Boarding

Nurseries

The Scottish Family Information Service has details of childcare available throughout Edinburgh www.scottishchildcare.gov.uk

To access nursery inspection reports, go to the Care Inspectorate website

www.scswis.com

For further information please visit

www.edinburgh-inspiringcapital.com/live.aspx

*For international students, Fettes College in Edinburgh offers the International Baccalaureate (IB) as an alternative to A levels.

The Scottish Council of Independent Schools (SCIS) gives information and advice for parents seeking an independent school. A free directory is available and details of schools can also be found on the SCIS website.



FETTES COLLEGE



BOROUGHMUIR SCHOOL



EDINBURGH ACADEMY

Businesses can receive support for investment in Edinburgh through a range of bespoke support services.



INSPIRING CAPITAL
www.investinedinburgh.com

THE HEADQUARTERS OF THE CITY OF EDINBURGH COUNCIL

Support Services



Investor Support

The City of Edinburgh Council's Investor Support team offer a range of services and support to organisations looking to locate within Edinburgh. From sourcing office space and recruiting staff, to finding a home and securing school placement, the team are there to support you at every step of the way. They are also able to offer investors incubation space while they identify permanent accommodation.

For any enquiries contact
invest@edinburgh-inspiringcapital.com
Tel: +44(0)131 529 6600
www.investinedinburgh.com



The Investor Support team are also able to connect you with the following Council support services:

Business Gateway

The City of Edinburgh Council also provides advice and support to businesses through the Business Gateway.

A range of guides and interactive tools are available on the Business Gateway website, including business information, regulation updates, event alerts, online government services and downloadable documents. Business Gateway runs local workshops covering topics such as starting up, sources of finance, employing people, sales and marketing, international trade, growing your business and buying or selling a business.

Initial support

www.bgateway.com

- Business information
- Market research reports
- Credit checks
- Premises search
- Enhanced support for high growth business starts

Additional support

- Business information
- Growing your business
- Workshops and events
- Executive skillsbank database

Business Partnerships team

The Business Partnerships team can provide advice on a range of development and regeneration matters and work closely with the key private sector parties in the city.

Planning department

Provides advice on pre-applications and processing applications for planning consent.

www.edinburgh.gov.uk/info/205/planning-guidance_and_policies

Scottish Development International (SDI)

SDI provides a range of services to help your company discover all the benefits of investing in Scotland. Whether looking to invest, relocate, partner or expand in Scotland, SDI will work with you to ensure the success of your business endeavour. They are able to offer the following services:

Initial support

www.sdi.co.uk

- Access to specialist expertise
- General business and sector-specific advice
- Market information
- Financial assistance: information on business grants and incentives
- Information on moving to Scotland
- Employer resources

Aftercare

- Business development support
- Marketing and market research assistance
- PR services
- Investment advice
- Specialised training

Scottish Enterprise

Scottish Enterprise is the country's main economic, enterprise, innovation and investment agency. Its ultimate goal is to stimulate sustainable growth of Scotland's economy. Scottish Enterprise provides a range of funding opportunities for start-up businesses with the potential for high growth.

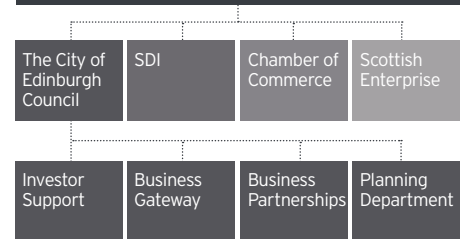
www.scottish-enterprise.com

Chamber of Commerce

Edinburgh Chamber of Commerce is a member-led organisation, working to support the local business community and specifically their strong network of member businesses. They help to strengthen the position of their members and ensure that the interests of local businesses are heard.

www.edinburghchamber.co.uk

Support Services



Edinburgh. Capital of Scotland. The heart of an economically strong and diverse city region of 1.6 million people. Edinburgh is a diverse hub for tourism, talent and trade.

Capital Facts



Economy



**BEST LARGE EUROPEAN
CITY OF THE FUTURE
2012/2013**
FINANCIAL TIMES, fDi MAGAZINE

AVERAGE ANNUAL PRODUCTIVITY IN EUROPEAN CITIES (2010)

Dublin	€85,939
Frankfurt am Main	€75,377
Edinburgh	€68,907
Oslo	€67,009
Stockholm	€66,050
Lyon	€64,874
Helsinki	€64,281
Zurich	€62,561
Copenhagen	€54,503
Lisbon	€51,179

GDP per employee

Source: Organisation for Economic
Co-operation and Development



Connected

EUROPE'S
LEADING
DESTINATION

WORLD
TRAVEL
AWARDS
2012



BEST EUROPEAN
AIRPORT

AIRPORTS COUNCIL
AWARDS EUROPE 2012

DIRECT FLIGHTS
TO MORE THAN

130

DESTINATIONS, WITH 40+
AIRLINES FLYING OUT OF
EDINBURGH AIRPORT



UK'S
FASTEST

AVERAGE BROADBAND SPEEDS

Source: Ofcom, Communications
Infrastructure Report

Skilled

MORE THAN

89,000

UNIVERSITY AND COLLEGE
STUDENTS, INCLUDING OVER
16,000
INTERNATIONAL STUDENTS

Source: Edinburgh's Universities and Colleges



MORE THAN

40%

OF WORKING
AGE RESIDENTS
HOLD DEGREES



Source: Scottish Government, Scottish Household Survey



Knowledge economy - home to four
universities with over 58,000 students,
including the University of Edinburgh,
ranked the 6th best in Europe by The Times.

WORKING AGE POPULATION (GRADUATES)



Source: Office for National Statistics, Annual Population Survey



A multi-lingual workforce with over 57,000
residents fluent in second languages
including French, Spanish and Cantonese.

Quality of Life



BEST PLACE
TO LIVE IN
THE UK
YOUNGOV



MORE MICHELIN
STARRED
RESTAURANTS
THAN ANY OTHER
UK CITY OUTSIDE LONDON



A sustainable alternative: more
than 70km of traffic-free cycle
paths criss-cross the city.

Edinburgh Festival

IN 2012, EDINBURGH
FESTIVAL FRINGE - THE
WORLD'S LARGEST ARTS
FESTIVAL - SOLD

1.8 MILLION

TICKETS FOR
2,695
SHOWS
FEATURING SOME
22,500
PERFORMERS



Source: The City of Edinburgh Council, Edinburgh Festivals Survey

For further information please visit
www.investinedinburgh.com



Invest Edinburgh
t +44 (0)131 529 6600
www.investinedinburgh.com

www.twitter.com/investedinburgh
www.linkedin.com/companies/invest-edinburgh